

## アルシュワイミヤ (Al shuwaymiyah) 鉱山プロジェクト

[Minerals Development Oman \(mdo.om\)](http://mdo.om)

MDO はドファール特別行政区のアルシュワイミヤ地区に約 1500 平方キロメートルの規模で世界クラスの工業鉱物団地を開発中です。3 つの主要な採石場で構成され、4000 万トンのライムストーン、ドロマイト、ジプサムを生産し、計画によると 2024 年に建設工事が開始され、2027 年に商業運転が開始される予定です。

実施中のプロジェクトへの直接投資、新しい採掘プロジェクトの設立、現在および将来のプロジェクトで生産される原材料の購入契約など、前途原材料への投資または購入にご興味がありそうな日本企業さまを募集しております。

この件に関するお問い合わせ、現地プロジェクトチームとの個別オンラインミーティングのお申込みは下記までお願い申し上げます。

Mr. Ali Al-Hashar, General Manager of Al Shuwaymiyah Project

Email: [ali.hashar@mdo.om](mailto:ali.hashar@mdo.om)

オマーン・スルタン国大使館 佐藤

Email: [info@omanembassy.jp](mailto:info@omanembassy.jp)

Tel: 03-5468-1088



# WHO WE ARE?

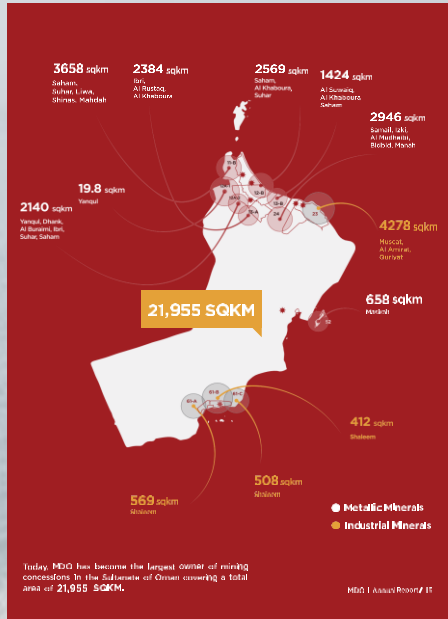
## Shareholders

Oman Investment Authority



الشركة العمانية للتنمية الإستثمارات الوطنية  
Oman National Investments Development Company

“MDO is the largest owner of mining concessions in Oman”



## MDO's Strategic Minerals



### Metallic Minerals

- Copper
- Gold
- Chromite



### Industrial Minerals

- Gypsum
- Limestone
- Silica
- Dolomite
- Salt

## MDO Portfolio



Mazoon Mining LLC



\*Oman Mining Company LLC



Oman Chromite Company SAOG



Kunooz Oman Holding SAOC



Ahjaar Mining LLC



Duqm Quarries



Naqaa Salt



Wafra Mining SPC

### Metals

### Industrial Minerals



Sohar Titanium



Synergies Casting Oman

### Downstream

# WHY MDO?

### STRATEGIC POSITION



Oman's **proximity** to growth markets (**GCC, Africa, and East Asia**)

### ALIGNMENT



MDO and Ministry of Energy and Minerals (**the Regulator**) complementing each other

### NATURAL RESOURCES



Oman has **significant mineral resource** endowment, which remains underexploited commercially

# Shuwaymiyyah Project



~1,500 sq km area in Al-Shuwaymiyeh-Menji mineral zone area in Dhofar Governorate, Sultanate of Oman.



## Key Minerals

### Limestone

~2.5B tons  
Purity > 98%



### Gypsum

~963.3M tons  
Gypsum + Anhydrite  
94.47%



### Dolomite

~1.35B tons  
>19% MgO

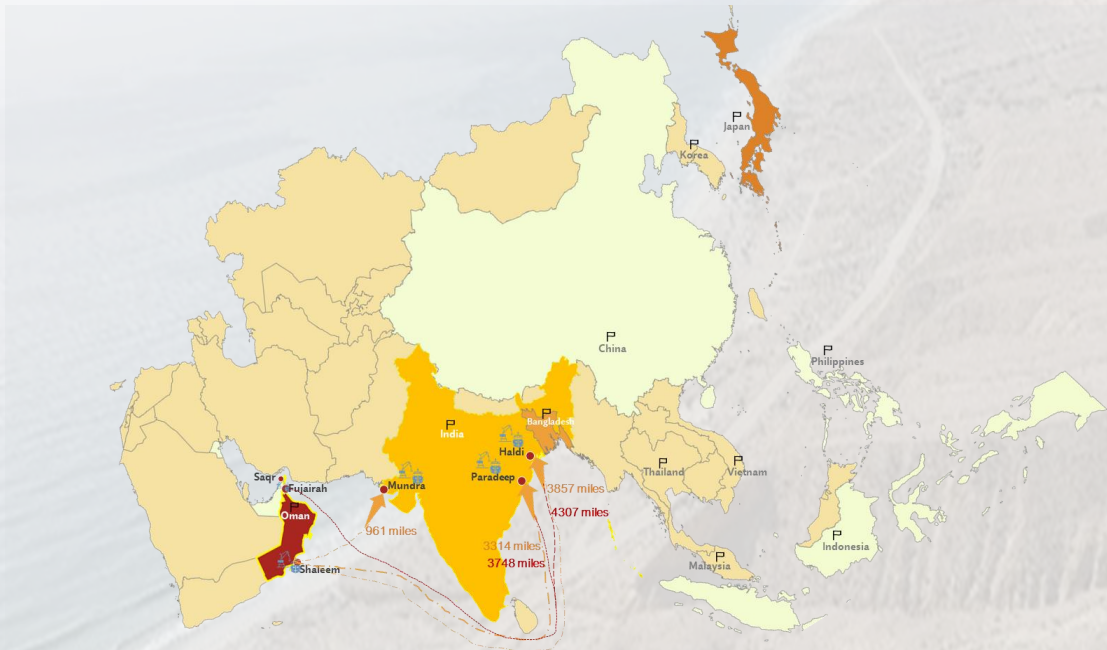


**Dedicated Deep Sea Port near the most growing markets**

**>100 years of market needs**

## The Port

The project is designed to be constructed **next to mines** with a **conveyor belt** system for transferring the materials from mines to port.



**Travel Time and Distance** are lesser to reach Indian west coast compared to other ports

**Port Size** designed to host **Capesize** and **Panamax Vessels**

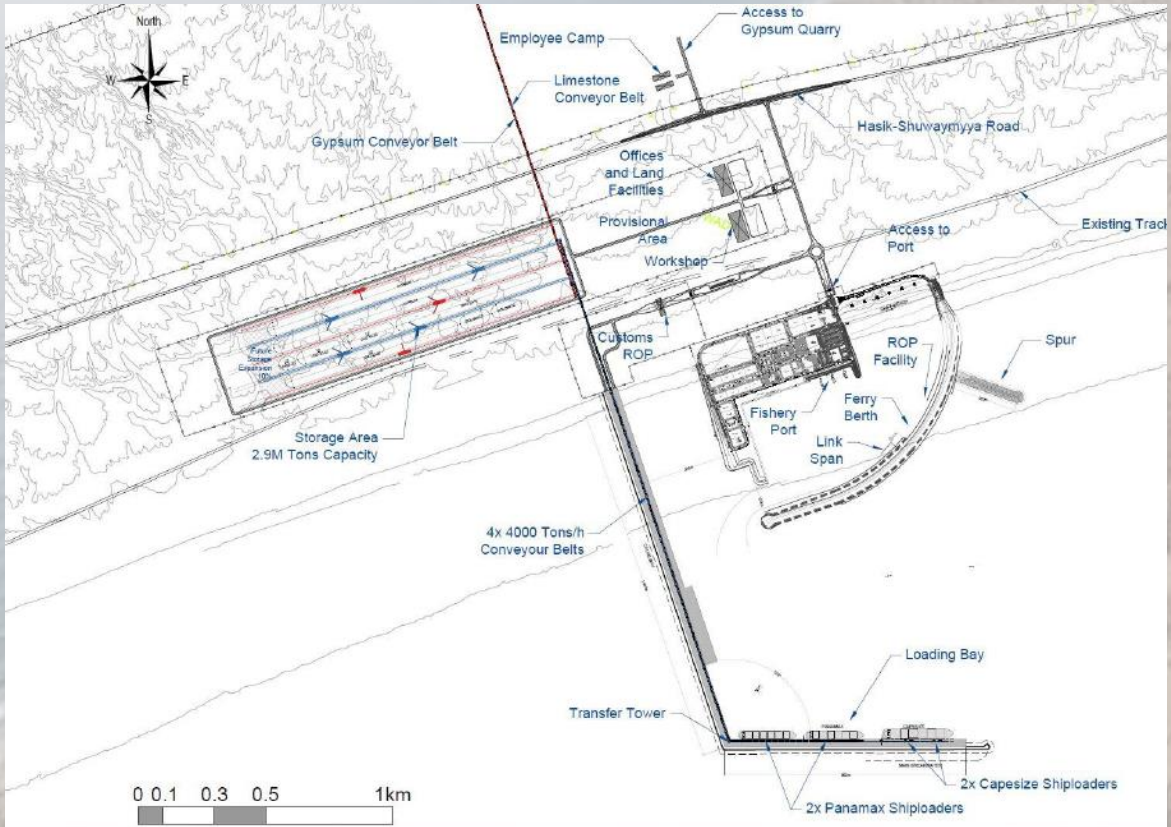
Capesize Port Name	Shuwaymiyyah Port – Oman	Ras Al Khaimah Port – UAE
India – <b>Mundra</b>	961 mi	997 mi
India – <b>Paradeep</b>	3314 mi	38334 mi
India – <b>Haldi</b>	3857 mi	3986 mi

**The distance** between **Shuwaymiyyah** and **India** western ports is shorter compared to the **UAE** ports. This gives **Shuwaymiyyah** an advantage in terms of cost, time, and profitability.

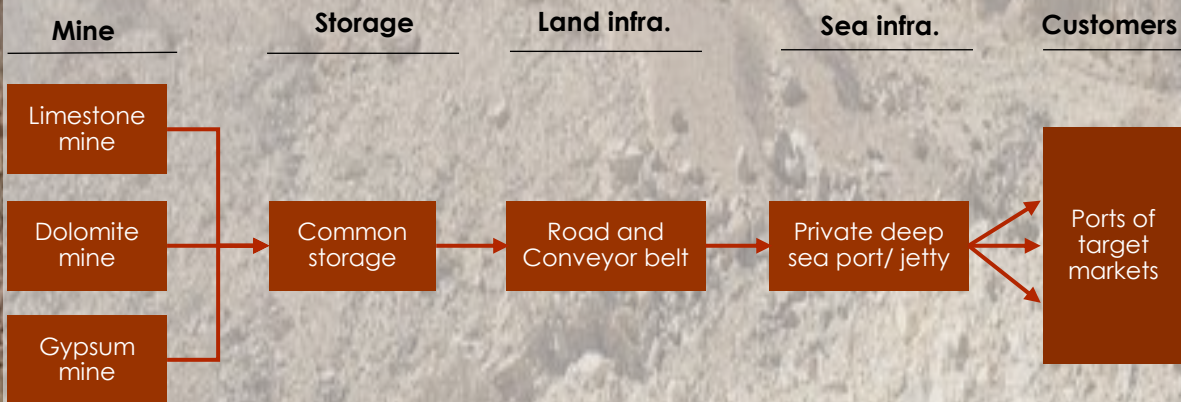


تـنـمـيـة مـعـادـن عـمـان  
MINERALS DEVELOPMENT OMAN

# Port Master Plan



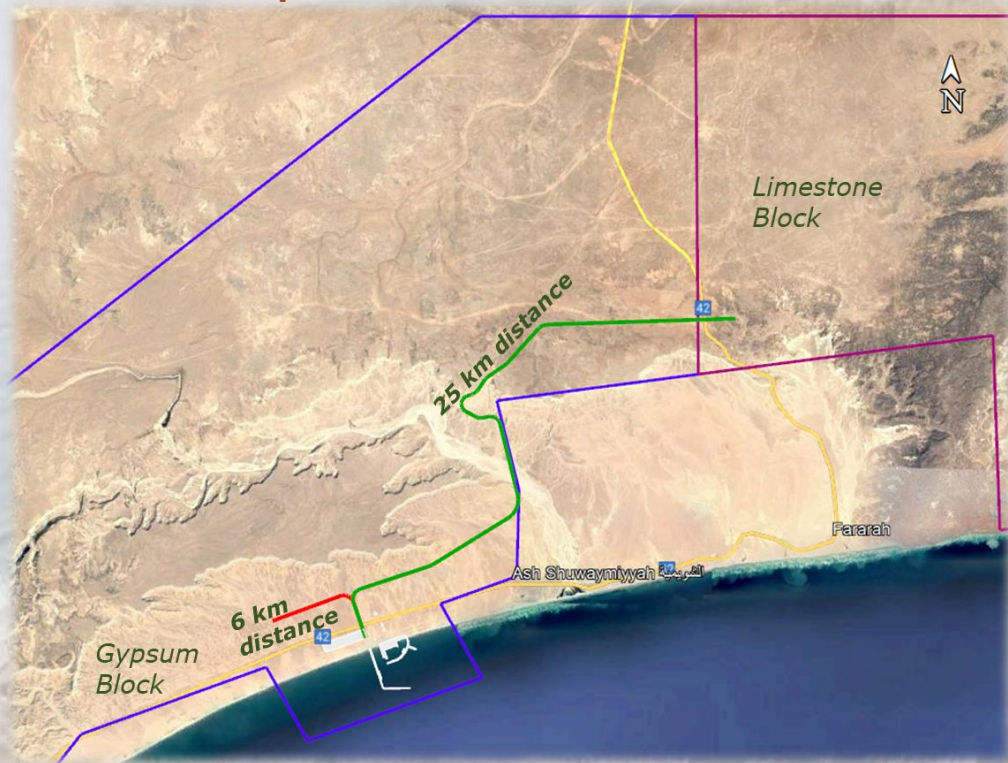
## High-level Logistics Design Schematic





# Why Shuwaymiyyah

Conveyor Belt System to transfer the materials from mine to port



**60 minutes** time to transport +2000 tonnes to the port.

**3 Million Tonnes** per month storage Capacity + 10% Expansion

**4 Ship Loaders** loading products in 36 hours.

# Limestone

**2.5 BILLION TONNES**

Available **Limestone** resources



## Suitable for:

Element	Figures
CaCO <sub>3</sub>	99.84%
CaO	52.9 – 56%
MgO	0.11 – 0.38 %
SiO <sub>2</sub>	0.14 – 2.3%
Al <sub>2</sub> O <sub>3</sub>	0.07 – 0.96%

Steel  
Grade

Chemical  
Grade

Cement  
Grade

## Physical Characteristics

Brightness	88.72 in Average
Crushing	12% Fine generation
Reactivity	9.39 at T 60
Decrepitation Index	2.557 %

## Product types

CP grade (40 to 80 mm)

SP grade (10 to 40 mm) products

Less of fine (0 to 10 mm) products

# Gypsum

**963 MILLION TONNES**

Available **Gypsum** resources



Element	Figures
Gypsum + Anhydrite	94.47%
Gypsum	77.08%
SiO <sub>2</sub>	0.61%
Fe <sub>2</sub> O <sub>3</sub>	0.05%
Al <sub>2</sub> O <sub>3</sub>	0.1%
MgO	1.18%
Density	2.3 g/cm <sup>3</sup>



# Dolomite

**1.35 BILLION TONNES**

Available Dolomite resources



Element	Figures
Anhydrite	17.39%
MgO	19.3%
SiO <sub>2</sub>	0.9%
CaO	32.7%
Fe <sub>2</sub> O <sub>3</sub>	0.22%
Al <sub>2</sub> O <sub>3</sub>	0.34%
Density	2.5 g/cm <sup>3</sup>



تنمية معادن عمان  
MINERALS DEVELOPMENT OMAN

# Future Destination – Shuwaymiyyah

## Downstream Development Opportunities

- Madayn and PDO are establishing an **industrial estate** within MDO concession, for **downstream** activities.
- The industrial estate will have access to **infrastructure and energy** resources (gas and electricity).
- This will allow for the development of downstream projects such as **clinker, cement** and **plasterboard** plants



شركة تنمية نفط عمان  
Petroleum Development Oman



مدائن  
madayn

## Cost Indications

### Land Rent

- 1 OMR per square meter/year

### Electricity Supply

- Local Electricity companies (starting from 16 Bz / KWh)

### Gas Supply

- Gasoline ~0.91 OMR / Gallon
- LPG ~0.29 OMR / L

### Taxes

- Income tax at a fixed rate of 15% per annum and fixed customs duties of 5%.

# Contact Details

---

## **Sales and Marketing**

Irfan Ali

Sales Manager

Email: [Irfan@duqmquarries.om](mailto:Irfan@duqmquarries.om)

Phone: +968-95319348

## **Project Related Inquiries:**

Ali Al Hashar

Operations Director\_ Ash Shuwaymiyyah

Email: [ali.hashar@mdo.om](mailto:ali.hashar@mdo.om)

Phone: +968-22504314 or +968-98000882

## **Partnership and Business Development:**

Aziza Al Rawahi

Business Development Associate

Email: [aziza.rawahi@mdo.om](mailto:aziza.rawahi@mdo.om)

Phone: +968-22504377 or +968-98666866